

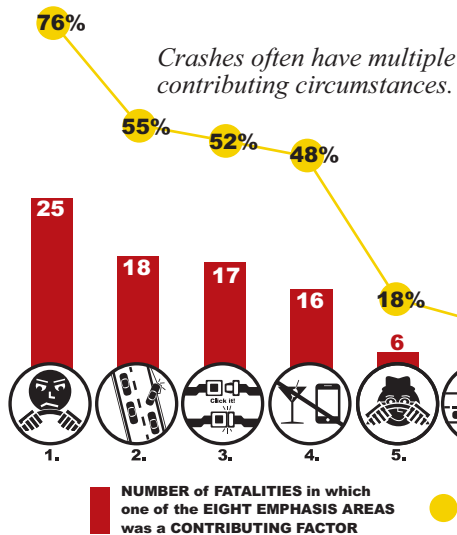


This bulletin provides an annual snapshot of road safety in CHESTER COUNTY and its 73 municipalities. It highlights and compares trends at the state, county, and local levels.

### What Contributed to Fatalities in 2013?

Aggressive driving remained the top contributing factor for traffic fatalities in Chester County. It contributed to 76 percent of crash fatalities, which is higher than last year (61 percent). Improvements in the eight emphasis areas could significantly reduce crash fatalities, listed in descending order for Chester County.

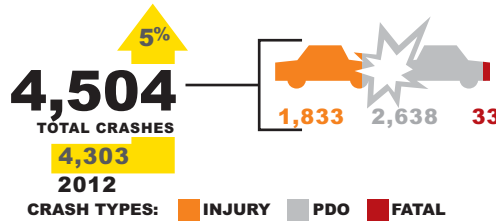
1. Curb Aggressive Driving
2. Keep Vehicles on the Roadway and Minimize the Consequences of Leaving the Roadway
3. Increase Seat Belt Usage
4. Reduce Impaired and Distracted Driving
5. Sustain Safe Senior Mobility
6. Improve the Design and Operation of Intersections
7. Ensure Pedestrian Safety
8. Ensure Young Driver Safety



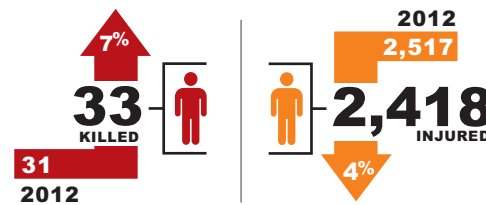
## 2013 Quick Crash Stats: Chester County

The following figures summarize total reportable<sup>3</sup> crashes [🌟], number of people injured [👤] and killed [👤], and Property Damage Only (PDO)<sup>1</sup> crashes for Chester County in 2013. Compared to 2012, crashes and fatalities are up, and injuries are down.

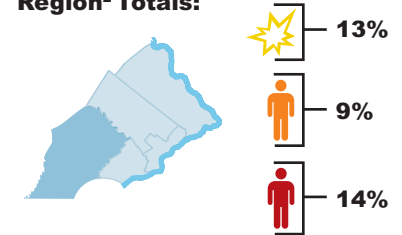
### CRASHES



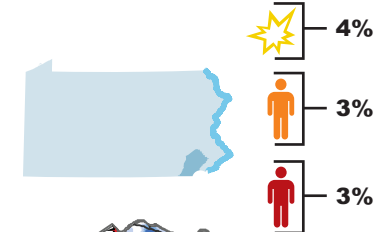
### PEOPLE INVOLVED



### Chester County, Compared to DVRPC's Pennsylvania Five-County Region<sup>2</sup> Totals:



### Chester County, Compared to the Rest of Pennsylvania's Totals:

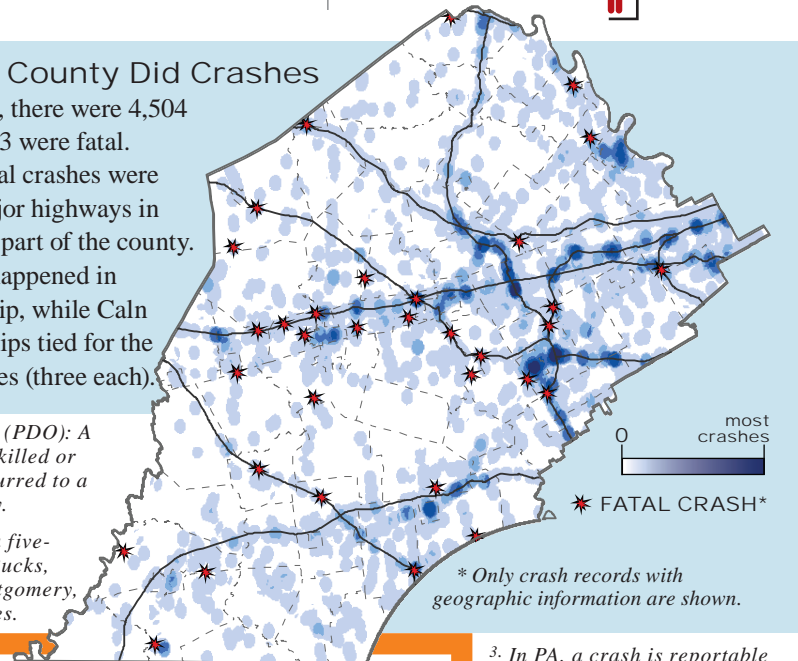


### Where in the County Did Crashes Occur?

In 2013, there were 4,504 crashes, of which 33 were fatal. The majority of fatal crashes were clustered along major highways in the eastern-central part of the county. The most crashes happened in Tredyffrin Township, while Caln and Valley Townships tied for the most traffic fatalities (three each).

<sup>1</sup>Property Damage Only (PDO): A crash where no one was killed or injured, but damage occurred to a vehicle or other property.

<sup>2</sup>DVRPC's Pennsylvania five-county region includes Bucks, Chester, Delaware, Montgomery, and Philadelphia counties.



These eight emphasis areas were identified in the 2015 Transportation Safety Action Plan: Improving Safety in the Delaware Valley, and were contributing factors in 97 percent of crash fatalities in the Delaware Valley, for the period 2010 through 2012.

<sup>3</sup> In PA, a crash is reportable when a person is injured or killed, or if a vehicle must be towed from the scene.

See the back for an inside look at crash trends for each municipality.

# What Are the Crash Trends in My Municipality?



# of CRASHES



# of PEOPLE INJURED



# of PEOPLE KILLED

MUNICIPALITY	2009			2010			2011			2012			2013			TOTALS: 2009-2013		
ATGLEN BORO.	3	2	0	4	1	0	4	4	0	3	2	0	8	4	0	22	13	0
AVONDALE BORO.	16	10	0	11	3	0	17	10	0	13	5	0	14	12	0	71	40	0
BIRMINGHAM TWP.	41	23	1	46	21	0	57	31	0	34	13	0	45	19	0	223	107	1
CALN TWP.	127	81	0	130	75	1	145	109	0	108	81	1	165	109	3	675	455	5
CHARLESTOWN TWP.	92	36	0	89	50	0	98	45	1	85	41	1	76	39	0	440	211	2
COATESVILLE CITY	79	43	0	89	58	1	60	36	0	64	50	0	75	51	0	367	238	1
DOWNINGTOWN BORO.	49	30	0	50	21	0	58	31	2	51	26	0	52	36	0	260	144	2
EAST BRADFORD TWP.	82	37	0	80	49	1	68	32	0	75	45	0	58	34	1	363	197	2
EAST BRANDYWINE TWP.	45	12	1	33	19	0	35	21	0	35	16	1	51	24	1	199	92	3
EAST CALN TWP.	96	64	0	85	51	0	64	26	1	90	64	0	67	34	0	402	239	1
EAST COVENTRY TWP.	44	24	2	54	32	0	51	31	1	23	16	0	44	35	0	216	138	3
EAST FALLOWFIELD TWP.	40	22	0	34	23	0	29	14	0	60	37	0	37	25	0	200	121	0
EAST GOSHEN TWP.	82	54	0	67	38	0	91	40	1	85	42	2	102	51	0	427	225	3
EAST MARLBOROUGH TWP.	72	26	0	80	44	0	59	24	0	63	31	1	79	25	1	353	150	2
EAST NANTMEAL TWP.	37	20	0	53	31	0	36	19	1	34	16	2	28	21	0	188	107	3
EAST NOTTINGHAM TWP.	58	43	1	46	23	0	46	31	0	36	29	0	55	25	2	241	151	3
EAST PIKELAND TWP.	83	36	0	92	31	0	92	35	2	72	41	0	61	27	1	400	170	3
EAST VINCENT TWP.	52	27	1	38	28	0	49	21	0	48	25	1	93	51	1	280	152	3
EAST WHITELAND TWP.	161	79	0	197	88	1	187	94	0	156	83	0	64	39	1	765	383	2
EASTTOWN TWP.	80	48	1	87	45	0	93	33	0	108	68	2	174	75	0	542	269	3
ELK TWP.	12	3	0	10	6	0	13	10	0	16	21	0	16	17	0	67	57	0
ELVERSON BORO.	11	6	0	5	3	0	7	2	0	5	4	0	4	2	0	32	17	0
FRANKLIN TWP.	37	23	0	38	23	0	41	19	0	46	20	0	34	19	0	196	104	0
HIGHLAND TWP.	27	21	0	28	19	1	37	27	0	28	18	0	30	16	1	150	101	2
HONEY BROOK BORO.	8	5	0	11	8	0	10	5	0	5	2	0	8	5	0	42	25	0
HONEY BROOK TWP.	68	54	1	57	51	2	46	34	0	60	46	0	46	29	2	277	214	5
KENNETT SQUARE BORO.	28	12	0	39	14	0	43	11	0	41	13	0	87	33	1	238	83	1
KENNETT TWP.	91	53	0	83	49	0	124	74	1	90	41	2	56	24	0	444	241	3
LONDON BRITAIN TWP.	28	10	0	26	18	0	29	10	0	21	12	0	25	8	0	129	58	0
LONDON GROVE TWP.	66	29	1	64	41	5	74	33	0	73	46	1	19	15	1	296	164	8
LONDONDERRY TWP.	14	7	0	14	12	0	24	18	0	20	12	0	88	50	1	160	99	1
LOWER OXFORD TWP.	41	17	0	45	35	1	36	31	1	48	31	2	58	38	1	228	152	5
MALVERN BORO.	12	4	0	12	2	0	8	4	0	8	5	0	16	5	0	56	20	0
MODENA BORO.	5	4	0	1	0	0	3	1	0	4	1	0	1	1	0	14	7	0
NEW GARDEN TWP.	122	74	3	113	54	1	124	48	2	124	85	0	149	74	1	632	335	7
NEW LONDON TWP.	36	28	0	30	22	0	32	16	0	34	20	0	7	1	0	139	87	0
NEWLIN TWP.	11	9	0	10	4	0	17	10	0	19	8	0	44	17	0	101	48	0
NORTH COVENTRY TWP.	103	68	2	112	70	2	92	60	1	86	59	1	78	49	1	471	306	7
OXFORD BORO.	16	9	0	8	3	0	5	3	0	11	11	1	25	16	0	65	42	1
PARKESBURG BORO.	13	10	0	12	7	0	18	7	0	9	9	0	10	4	0	62	37	0
PENN TWP.	39	31	0	43	30	0	47	25	0	43	25	0	38	31	0	210	142	0
PENNSBURY TWP.	41	23	0	33	21	1	34	23	1	52	35	0	37	13	0	197	115	2
PHOENIXVILLE BORO.	111	54	0	119	53	0	112	66	1	125	60	0	105	44	0	572	277	1
POCOPSON TWP.	31	12	0	17	10	0	25	13	0	19	10	0	38	13	0	130	58	0
SADSBURY TWP.	56	55	1	37	17	0	45	39	0	35	33	1	53	31	1	226	175	3
SCHUYLKILL TWP.	40	24	0	64	26	0	78	42	0	82	52	0	70	30	0	334	174	0
SOUTH COATESVILLE BORO.	12	5	0	9	6	1	14	12	0	16	7	0	14	14	0	65	44	1
SOUTH COVENTRY TWP.	32	30	0	28	12	0	41	31	2	33	25	0	35	34	0	169	132	2
SPRING CITY BORO.	13	7	0	17	15	0	19	8	0	14	4	0	9	7	0	72	41	0
THORNBURY TWP.	21	11	1	19	5	0	32	12	0	32	21	0	31	11	0	135	60	1
TREDYFFRIN TWP.	217	115	0	297	164	0	310	150	0	300	177	0	295	159	0	1,419	765	0
UPPER OXFORD TWP.	44	19	2	33	25	1	30	19	0	30	23	0	34	18	0	171	104	3
UPPER UWCHLAN TWP.	92	62	0	83	33	1	89	43	1	99	79	1	95	41	0	458	258	3
UWCHLAN TWP.	158	82	0	131	63	1	147	75	3	144	65	1	124	57	0	704	342	5
VALLEY TWP.	71	38	0	50	30	1	69	42	1	41	26	1	52	35	3	283	171	6
WALLACE TWP.	52	21	0	38	26	1	47	14	0	44	40	0	38	18	0	219	119	1
WARWICK TWP.	23	10	0	18	10	2	21	16	0	23	11	1	27	10	0	112	57	3
WEST BRADFORD TWP.	114	66	3	97	65	0	98	62	0	89	31	0	101	75	2	499	299	5
WEST BRANDYWINE TWP.	73	47	2	52	29	0	60	34	5	55	36	0	55	42	0	295	188	7
WEST CALN TWP.	67	36	2	58	40	3	62	33	1	44	26	0	62	17	0	293	152	6
WEST CHESTER BORO.	102	52	0	113	94	0	102	72	0	104	60	1	108	72	1	529	350	2
WEST FALLOWFIELD TWP.	23	20	2	25	13	0	22	17	1	25	12	0	17	13	0	112	75	3
WEST GOSHEN TWP.	309	152	0	152	96	1	209	122	4	203	117	1	250	144	2	1,123	631	8
WEST GROVE BORO.	13	5	0	12	7	0	12	7	0	14	8	0	8	1	0	59	28	0
WEST MARLBOROUGH TWP.	36	10	0	31	16	1	37	18	0	40	23	1	40	24	1	184	91	3
WEST NANTMEAL TWP.	36	19	0	39	33	1	43	24	0	43	28	0	66	27	1	227	131	2
WEST NOTTINGHAM TWP.	15	5	0	19	12	1	23	48	1	15	10	0	19	8	0	91	83	2
WEST PIKELAND TWP.	57	20	0	49	20	0	54	22	0	63	26	1	34	21	1	257	109	2
WEST SADSBURY TWP.	41	30	0	40	29	0	43	36	0	40	31	1	42	29	0	206	155	1
WEST VINCENT TWP.	54	19	0	28	15	0	42	27	1	48	23	0	95	37	1	267	121	2
WEST WHITELAND TWP.	225	111	2	231	103	0	279	136	2	228	123	2	57	31	0	1,020	504	6
WESTTOWN TWP.	84	36	0	106	57	0	93	40	2	74	34	0	213	97	0	570	264	2
WILLISTOWN TWP.	92	62	2	79	43	0	76	48	0	95	41	1	93	55	0	435	249	3
COUNTY-WIDE TOTALS	4,482	2,452	31	4,250	2,390	32	4,537	2,486	40	4,303	2,517	31	4,504	2,418	33	22,076	12,263	167

This bulletin provides an annual snapshot of road safety in Chester County and its 73 municipalities. It highlights and compares trends at the state, county, and local levels. This document complements the 2013 Annual Crash Data Bulletin for the Delaware Valley (DVRPC Publication #15023) and is a supplement to the 2015 Transportation Safety Action Plan: Improving Transportation Safety in the Delaware Valley (DVRPC Publication #15022). Analysis in this document was derived from the PennDOT crash database unless otherwise noted. For more information contact: Regina Moore at rmoore@dvrpc.org or 215.238.2862

